

AL-5141 (FAA)

VORTAC ICT <u>113.8</u> Chan 85	APP CRS <b>273°</b>	Rwy Idg TDZE Apt Elev	<b>N/A</b> <b>N/A</b> <b>1408</b>
---------------------------------------	------------------------	-----------------------------	---

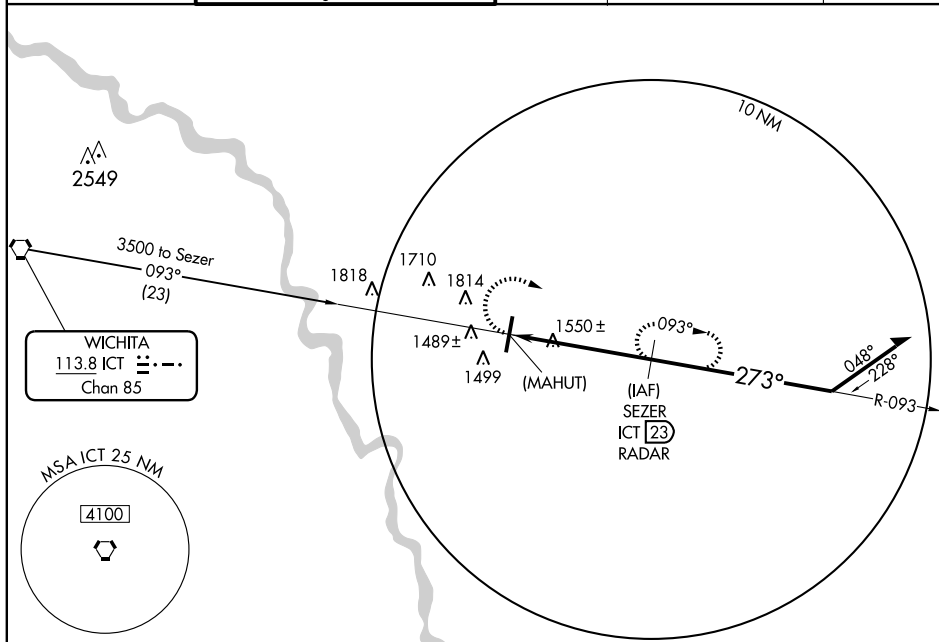
VOR or GPS-B  
WICHITA/BEECH FACTORY (BEC)

**T** Obtain local altimeter setting on CTAF; when not received use Wichita Mid-Continent altimeter setting.

**A** NA

**MISSED APPROACH:** Climbing right turn to 3000 via ICT R-093 to SEZER 23 DME/RADAR and hold.

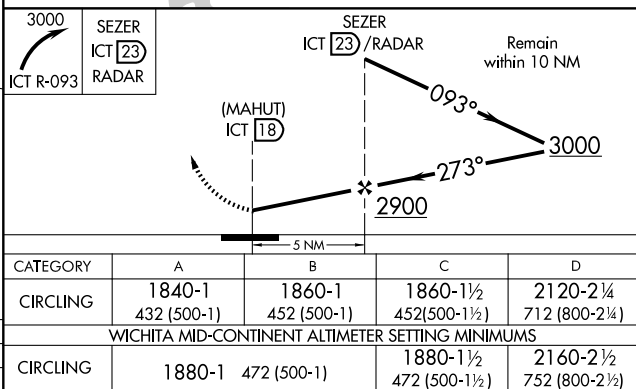
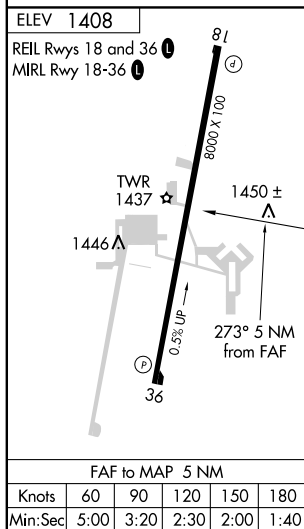
WICHITA APP CON <b>134.8 269.1</b>	BEECH TOWER ★ <b>126.8 (CTAF) 313.6</b> CTAF 122.7 (When tower closed)	GND CON <b>121.7</b>	CLNC DEL <b>125.0</b> (When tower closed)	UNICOM <b>122.95</b>
---------------------------------------	--	-------------------------	--	-------------------------



NC-2, 06 JUL 2006 to 03 AUG 2006

NC-2, 06 JUL 2006 to 03 AUG 2006

RADAR or DME REQUIRED



WICHITA, KANSAS  
Amdt 2 03079

37° 42' N-97° 13' W

WICHITA/BEECH FACTORY (BEC)  
VOR or GPS-B